

DiATOME

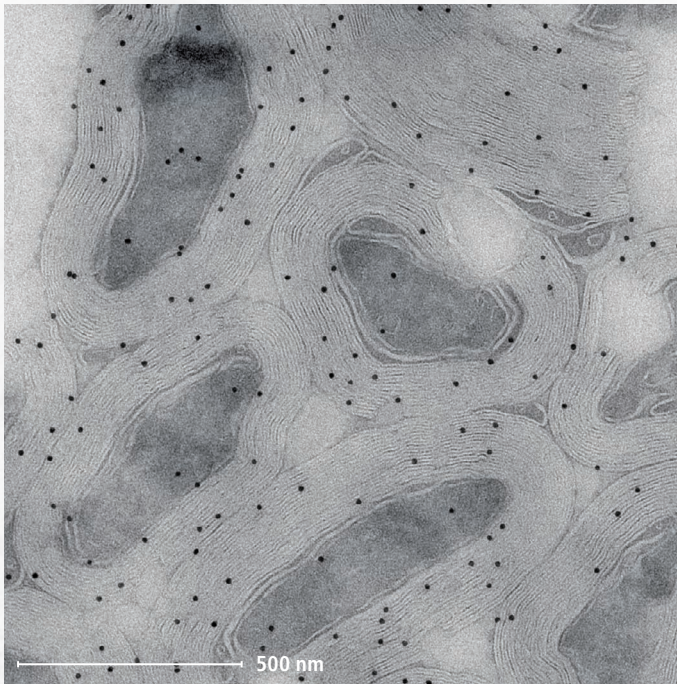
Swiss Diamond Knives

trim

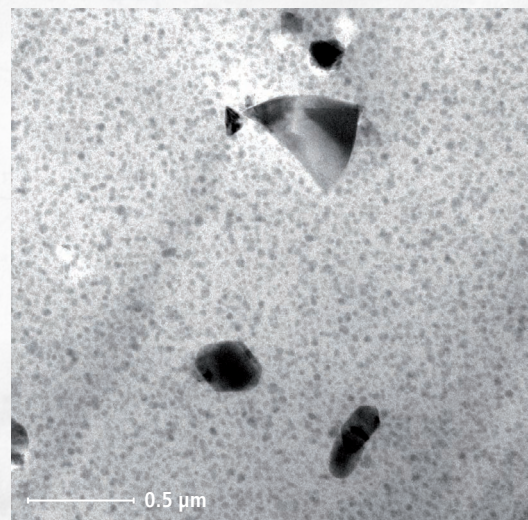
The Diatome trim knives fulfil your trimming requirements:

- Rapid and precise trimming.
- Shiny block faces and pyramidal sides.
- Sample surfaces aligned with the cutting direction.

For successful ultramicrotomy in biology and materials research, precise trimming is mandatory.



▲ Mouse optic nerve, immunolabeling of the major myelin protein proteolipid protein (PLP), 10 nm gold.
Wiebke Möbius, Dept. of Neurogenetics, EM Core Facility, MPI of Experimental Medicine, Göttingen.



▲ SiC, SiO₂, TiO₂ and AlO₃ nanoparticles in polymer matrix.
Claudia Mayrhofer, TU Graz.

More details on the reverse side.

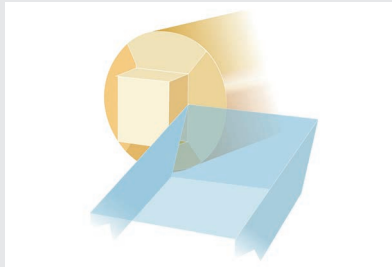
Swiss Diamond Knives

trim knives applications

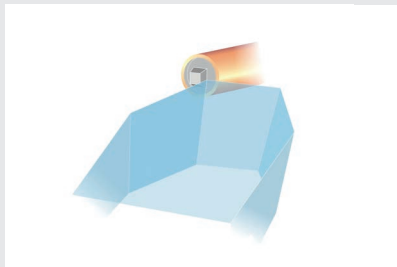
Biology



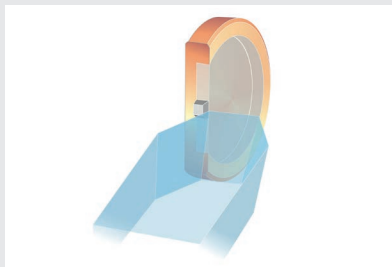
Trimming resin blocks with the trim 45. Trimming brittle materials (bone, teeth, etc)



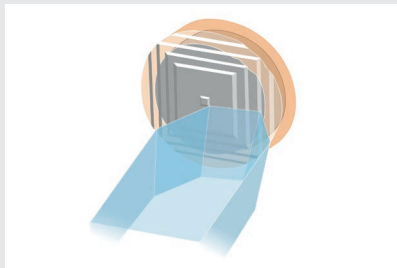
Trimming resin blocks with the trim 90 for FIB, SBF-SEM



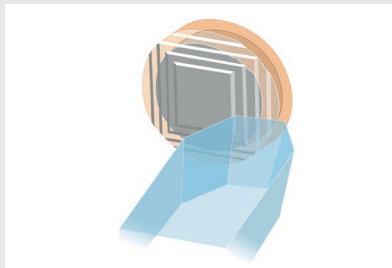
Cryo trimming a cell suspension HP frozen in a copper tube



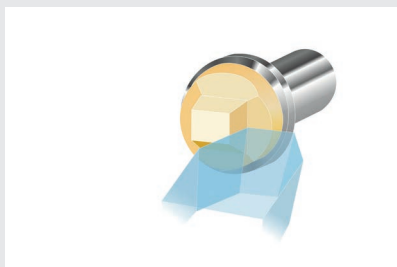
Cryo trimming tissue HP frozen in a flat specimen carrier



Cryo trimming planchettes for CEMOVIS

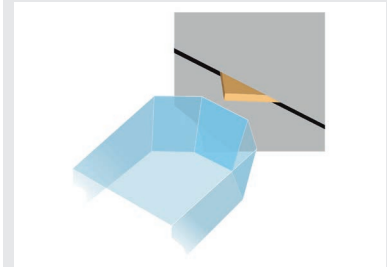


Cryo trimming for cryo FIB



Cryo trimming sucrose infiltrated tissue for Tokuyasu sectioning

Materials Research



Soft samples such as polymers, wood, metals, etc.
Brittle samples such as minerals, fossils, crystals, etc.

The importance of trimming with Diatome trim knives

A well trimmed sample is a precondition for perfect section ribbons.

Trimming with the Diatome trim knives improves the service time of your diamond knives.

When a sample is trimmed with glass knives or razor blades hard particles may be introduced in the surface or the pyramidal sides. These particles immediately cause knife marks in the diamond knives.

Order numbers

Knife type	Knife angle	Boat type	Code	Application
trim 45	45°	Triangular holder	DTB45	Trimming biological and materials science samples
trim 20			DTB20	
trim 90			DTB90	
trim 45-4.0			DCTB4540	

Diatome Ltd
Helmstrasse 1
2560 Nidau / Switzerland
Phone +41 32 332 91 13
diatome@diatome.ch
www.diatome.ch